



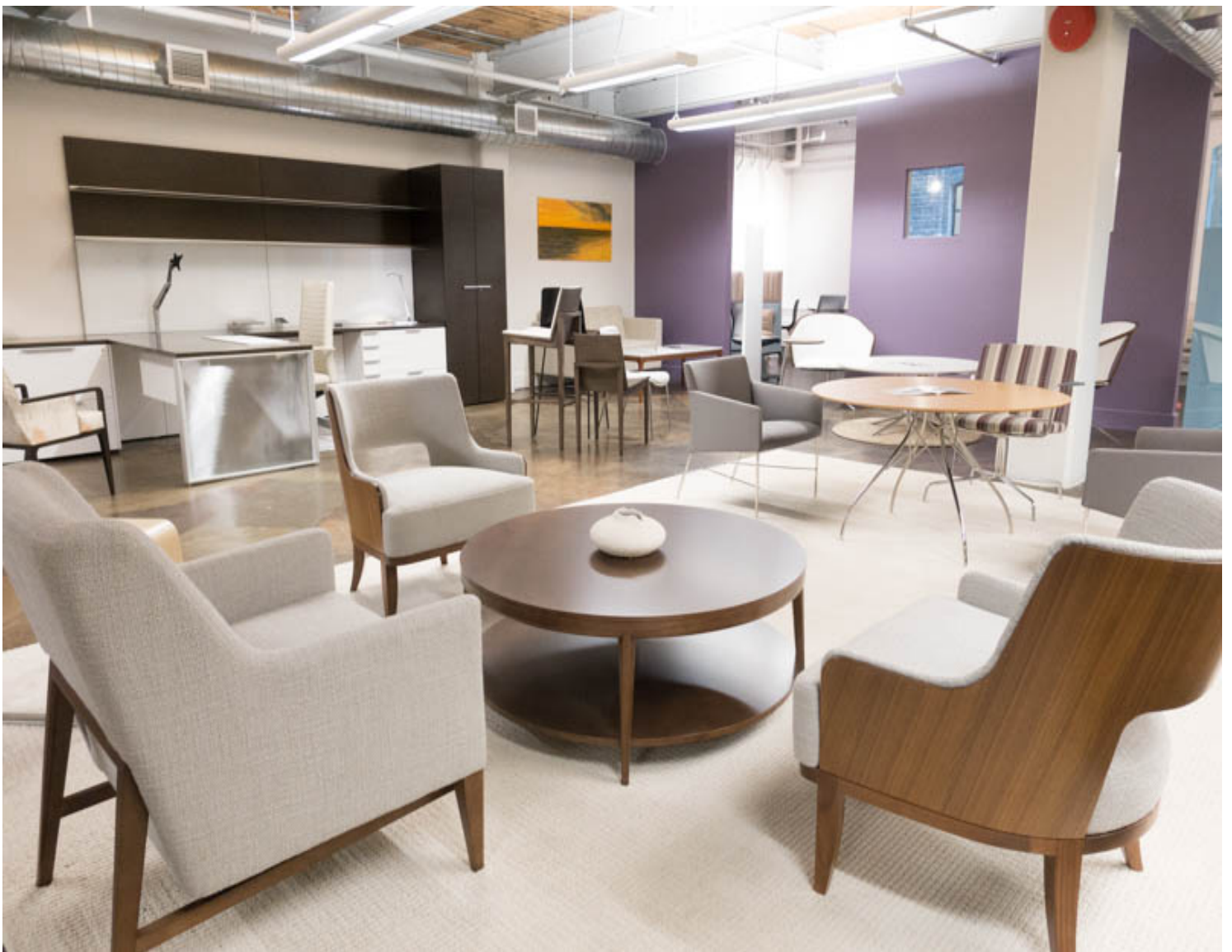
DUFFERIN LIBERTY CENTRE

SUB-LEASE

LIBERTY VILLAGE

5,300 SF.

DIVISIBLE: 1,700 SF. or 3,600 SF.



DETAILS:



SUB-LEASE UNTIL SEPTEMBER 30, 2016

SIZE: 5,378 SQ. FT.

NET RENT: \$19.25/SQ. FT.

TMI (INC. HYDRO): \$12.41

PARKING: \$122/Permit/Month
1 permit/2000 sq. ft.

*space is divisible to 3,600 sq. ft. or 1,700 sq. ft.

*Direct lease with Landlord possible for more term.

CONTACT:

ZEV GITALIS

Broker of Record, President

Abe Gitalis Real Estate Ltd., Brokerage

416.840.3444

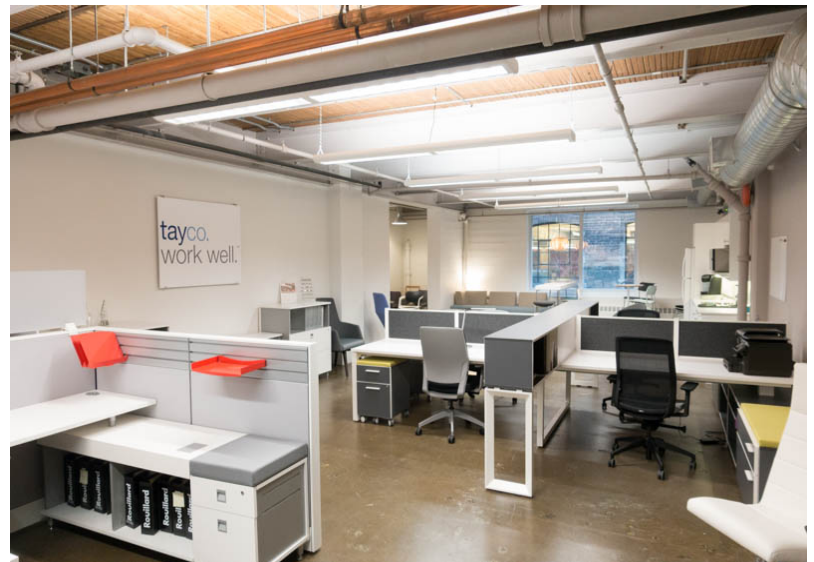
zev@gitalis.com

gitalis.com

CONFIDENTIALITY AND LIMITING CONDITIONS

The information contained herein has been obtained from sources such made available to Abe Gitalis Real Estate Ltd. and does not purport to contain all the information a prospective lessee may require. This package has been compiled solely for the convenience of prospective lessees to assist them in their determination of whether they wish to express further interest in leasing the property. This package does NOT form part of any terms or conditions of lease. Abe Gitalis Real Estate Ltd. has not independently verified any such information and assumes no responsibility for its accuracy or completeness and has no authority to bind Abe Gitalis Real Estate to any representation or warranty.

Abe Gitalis Real Estate Ltd. expressly reserves the right, at their sole discretion, to reject any or all proposals or expressions of interest for the Property; to terminate discussions with any party at any time, with or without notice; to withdraw the fee simple interest in the Property from the market, at any time, with or without notice; and to negotiate and enter into binding lease agreements with respect to the interest with any party at any time, all without any compensation to any party in all cases.





SCHEDULE A

UNIT 12C-14C

5,378 RENTABLE SQ FT

